

RURAL DEVELOPMENT INITIATIVES IMPACT SNAPSHOT

2020 ANNUAL REPORT



www.rdiinc.org

STRONGER RURAL COMMUNITIES

165
Active
Community Efforts

928
Rural
Leaders
Trained

87
Educated in
Access to
Capital &
Fundraising

93
Fundors
Engaged

STRONGER RURAL PEOPLE

112
Plans
Created or
Supported

3,061
Community
Members Engaged

369
Events
Strengthening
Connections

171
Communities
With Greater
Capacity to
Support Their
Economies

432
Partner
Organizations
Engaged

STRONGER RURAL ECONOMIES

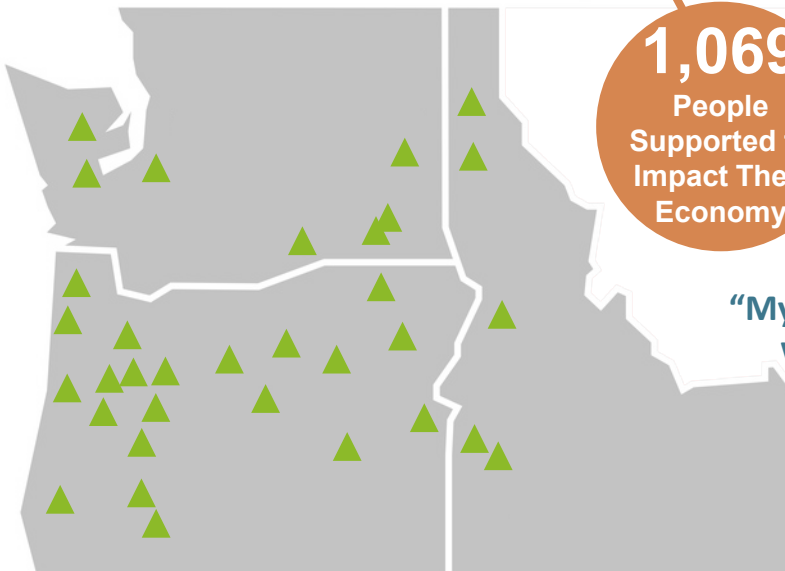
More Than
\$2,586,100
Leveraged

2,129
People at
Events

1,236
Businesses
Supported/
Engaged

1,069
People
Supported to
Impact Their
Economy

Provided testimony for
\$15.7 Million
\$5 mil Oregon Broadband Fund;
\$10.7 million to prioritize rural for
CBDG funding



“My favorite session featured youth entrepreneurs who participated in a mentorship program with business owners. Thoughtful and impactful stories were shared that were relevant and insightful. I plan to apply what I learned to my own work with youth.”

~ Regards to Rural Participant

SUPPORTING RURAL BUSINESSES & ENGAGING COMMUNITY MEMBERS

Spotlight on the Numbers

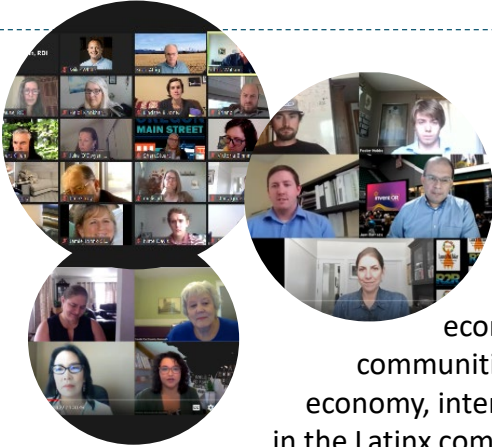
Through our programs and partners, RDI reached 1,236 rural businesses throughout Oregon. Many of these small business entrepreneurs received essential pandemic and recovery support. Thanks to Business Oregon, the Ewing Marion Kauffman Foundation, the Collins Foundation, and Mills Davis Foundation for their generous support. RDI's virtual convenings, including the Regards to Rural conference, the RuraLead learning initiative supported by the Robert Wood Johnson Foundation, workshops held in partnership with Oregon Main Street, and other events, drew 2,129 people.



VIRTUAL REGARDS TO RURAL CONVENING INSPIRES ATTENDEES

An Unparalleled Opportunity for Rural Leaders

The virtual Regards to Rural conference brought together more than 400 attendees interested in rural vitality from the Pacific Northwest. Participants connected with one another, learned from leaders in the fields of leadership, economic development and public policy, and were inspired to take action in their communities. Among other topics, sessions focused on entrepreneurship for an inclusive economy, intentional networking and allyship, impactful philanthropy, fostering participation in the Latinx community, resilient rural tourism economies, getting people to run for office, and creating youth entrepreneurs. Thanks to the following contributors for their generous support of the 2020 Regards to Rural conference: The Ford Family Foundation, Banner Bank, Business Oregon, The Collins Foundation, Energy Trust of Oregon, Network for Oregon Affordable Housing (NOAH), Northwest Area Foundation, The Oregon Community Foundation, Pacific Power, and Avista.



Missed the conference or a session you were interested in attending? Find the recordings online: r2r.rdiinc.org

“This session opened up the conference to a very real conversation about one of the most pressing issues in rural—race. Justin was a masterful speaker!” ~ Regards to Rural Participant

400+



Rural Leaders & Influencers

attended sessions virtually over a 2-day period, bringing their learning back to their rural communities.

“I will be working to get others elected to local office whether or not they fit the traditional type of elected official.” ~ Regards to Rural Participant

Regards to Rural 2020 Drew Participants Virtually From:



Rural Development Initiatives | www.rdiinc.org

Strengthening rural people, places, and economies in the Pacific Northwest.