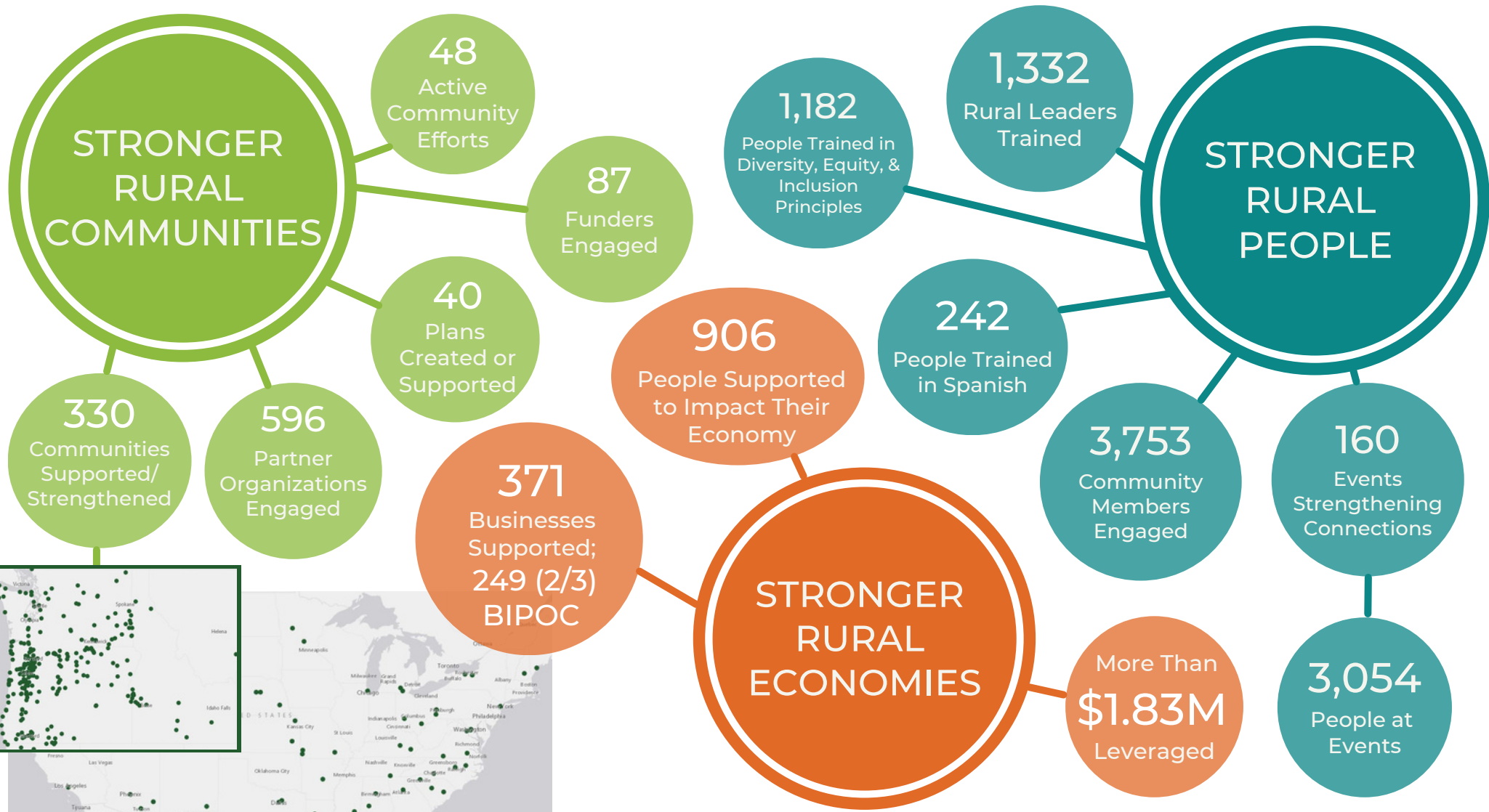


# RURAL DEVELOPMENT INITIATIVES 2022 IMPACT REPORT



Through our programs in the Pacific Northwest, along with Regards to Rural and the national RuraLead initiative, RDI worked alongside partners and participants from 330 communities across the U.S. in 2022.



Photo by: Barbara Huguenin, Kiwanis Club of Emmett

## EVERYONE AT THE TABLE IN OTHELLO, WA

RDI is thrilled to have been awarded \$250,000 from USDA Rural Development toward a collaborative effort to improve community vitality and foster economic growth in Othello, Washington, as part of the 2022 Rural Placemaking Innovation Challenge (RPIC).

RDI and partners are facilitating a process that includes a Placemaking Learning Tour of Northwest rural communities that have successfully implemented plans. Othello leaders are interested in developing small food businesses and fostering a food-related community gathering space, engaging local youth in community planning and projects, and building skills in community leadership, grant writing, and entrepreneurship. Business trainings will be tailored to Othello's large populations of youth and Spanish speakers.

The final product will be a Placemaking Plan that provides a roadmap for Othello leaders to achieve their goal of a thriving community. This project also includes an Innovation Seed Fund to fund small local projects.

“

This was a much needed and well implemented program. RDI did a great job not only helping our community but the surrounding Main Street efforts as well.

”

– Timothy Bishop,  
Main St. Economic Vitality Hub  
Participant, City of La Grande



“

The youth involvement is what I am excited about - we need to see more of that because they are the future of this community. I hope to see Othello as a place where there is opportunity for business growth... a place for future generations to grow.

– Othello Community Member

## REVITALIZING RURAL MAIN STREETS

RDI, in partnership with Oregon, Washington, and Idaho State Main Street programs, delivered Main Street Economic Vitality (EV) training and technical assistance to 25+ rural Northwest communities throughout 2022.

The program convenes networks of Main Street leaders to build fundamental skills for economic recovery and resiliency through workshops, trainings, and ongoing coaching and technical assistance.

"We have so much more knowledge about resources available to us and left the workshops feeling inspired to do more for our community," says a 2022 program participant.

Since 2020, RDI has worked with seven regional hubs, and we begin workshops with four new hubs in Spring 2023. This program is funded by USDA Rural Development, Pacific Power, and The Ford Family Foundation.

[Check out case studies and success stories from four rural communities that participated in the Main Street EV program.](#)





## READY, SET, GRANT! BRINGS SKILLS AND FUNDS TO RURAL NONPROFITS

RDI delivered three Ready, Set, Grant! trainings in 2022, including a Spanish-language offering. Trainings prepared 134 participants to find funding for their rural nonprofits. RDI partner Kelley Nonprofit Consulting (NPC) also provides 1-on-1 support to program participants.

"This was an incredible resource for me and my community. Thank you for creating this program. It demystified the process."

"This is THE MOST informative, professional, detailed grant writing session I have ever attended!"

Kristin Monahan of Kelley NPC shares, *"The past Ready, Set, Grant! year has been a busy one! In addition to helping organizations secure private and public funding – ranging from a \$500,000 federal grant supporting education to foundation grants supporting food systems, the arts, economic development and more – we also provided support for business sponsorship, development of strategic fund development plans, identification and vetting of potential funders, and financial management and reporting readiness."* Thanks to the Ford Family Foundation for their support of this program.

## ECONOMIC IMPACT

In 2022, RDI continued to grow our suite of Spanish-language services. RDI has long delivered Pasos al Éxito financial literacy and business trainings, and we've recently developed trainings for starting and running childcare (see *right*) and food businesses. We've also begun offering our Ready, Set, Grant! fund preparedness training in Spanish.

RDI was selected to join a nationwide cohort formed in 2022 to learn more about Latino financial education, and we are currently developing a new curriculum that provides skills related to investment and wealth building.

We've added more bilingual staff to our team, and we look forward to continuing to expand our Latino services to meet growing demand in our rural communities.



## STARTING AND GROWING CHILD CARE BUSINESSES

RDI piloted our Child Care Business Training in Hermiston, OR in Spring 2022, with a second program delivered in Dallas, OR over the summer. The Spanish-language program builds skills for aspiring, new, and existing child care providers in rural places.

Program participants learn about regulatory requirements, management of child care facilities, marketing, and more.

This training aims to help fill the child care gap. According to The Ford Family Foundation's Oregon by the Numbers 2022, "All 36 Oregon counties are considered child care deserts, which means for every regulated child care slot, there are at least three children who might fill it. As a result, many families across Oregon cannot find care for their children."

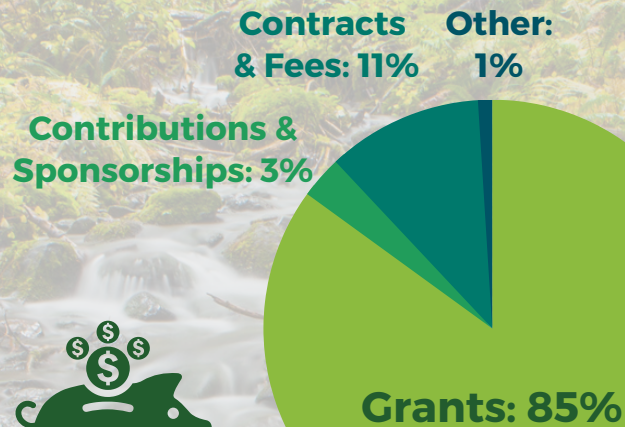
RDI will offer child care training in Cottage Grove and Milton-Freewater, OR in Spring 2023, thanks to the generous support of the MillsDavis Foundation and the Wildhorse Foundation.



# FUNDING IMPACT

## RDI Incoming Funds 2022

RDI is grateful to generous donors and forward-thinking foundations for providing flexible support that allows us to adaptively respond to the needs of rural people, places, and economies.



## RDI Expenses 2022

Fund Development



2%

Management & General



16%

Program Services



82%

# REGARDS TO RURAL IMPACT

RDI hosted our 12th biennial Regards to Rural Conference at the Wildhorse Casino on the Confederated Tribes of the Umatilla Indian Reservation in May 2022. 300 rural community members, leaders, and stakeholders gathered to learn and build lasting connections with one another. Conference sessions focused on equity in rural public policy, rural economic development, and diverse rural leadership. Here's what attendees had to say:

“ Shared learning experiences strengthen the relationships between community members who attend together. That connection goes back home with you and gives new energy to do the hard work you want to tackle together. ”

“ Regards to Rural was diversity and inclusion in action; demonstrated, modeled. It is the way rural leads - by doing. In a world where we hear more about what divides us than unites us, we collectively demonstrated how rural does and learns DEI... Regards to Rural is what rural vitality looks like. ”

