

RURAL DEVELOPMENT INITIATIVES

Q1 2023 IMPACT SNAPSHOT



rdiinc.org

STRONGER RURAL COMMUNITIES

10
Active
Community
Efforts

20
Funders
Engaged

182
Partner
Organizations
Engaged

145
Communities
Strengthened/
Supported

300
People Supported
to Impact Their
Economy

180
Businesses
Engaged/
Supported

STRONGER RURAL ECONOMIES

150
Rural Leaders
Trained

166
People Trained in
Diversity, Equity, &
Inclusion
Principles

STRONGER RURAL PEOPLE

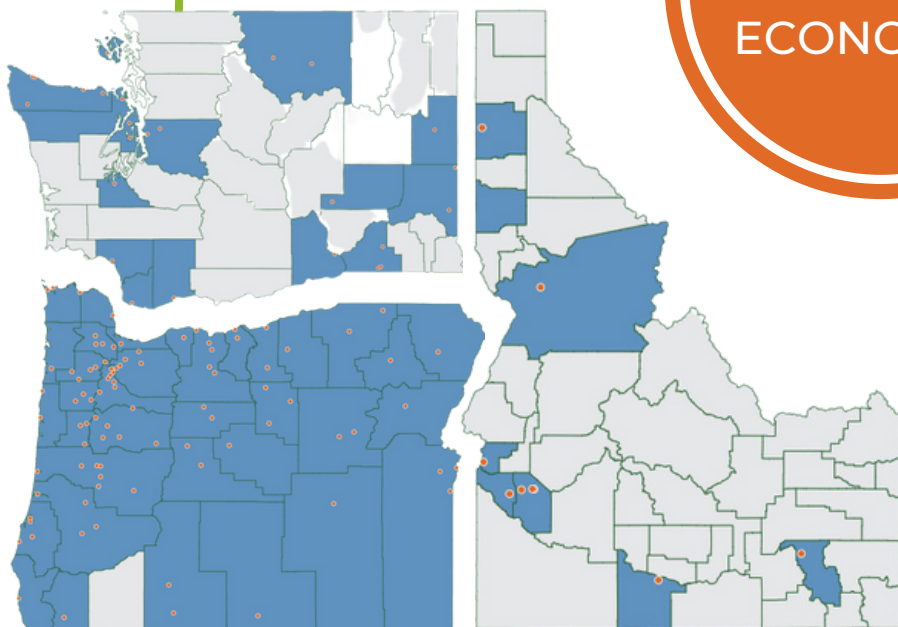
1100
Community
Members
Engaged

53
Events
Strengthening
Connections

740
People at
Events

91
Latino
Entrepreneurs
Trained

2+
New Latino
Businesses
Started



Through our programming and events, RDI has worked alongside participants and partners from 145+ communities in Q1 2023. Check out the [new interactive maps on the RDI website!](#)

RURAL DEVELOPMENT INITIATIVES

Q1 2023 IMPACT SNAPSHOT



rdiinc.org

OREGON FRONTIER SMALL BUSINESSES



RDI has been working with the Oregon Frontier Chamber of Commerce to assess the small business ecosystem in the region (Gilliam, Sherman, and Wheeler Counties). With 11 cities and a total population of 5,000, this rural region has seen economic fluctuations for years, and COVID impacts have demonstrated a great need for support and recovery.

As part of the assessment, RDI and the Oregon Frontier Chamber facilitated listening sessions and surveyed community members and businesses about needs, gaps, and opportunities in the region to identify priorities and next steps. With adequate support, resources, and a stronger entrepreneurial ecosystem, business and community vitality can flourish once again.

“ **I can say without hesitation this program is among the most valuable and enriching programs ever to develop in our region. We are truly stronger when we work together.** ”

- K'Lynn Lane, Oregon Frontier Chamber of Commerce

Congratulations to Ines Oliva-Villalpando of Happy Kids Daycare in Milton-Freewater, Oregon! Ines participated in RDI's Spanish-Language Childcare Business Training in February and is the program's first start-up grant recipient. She will use the \$1,000 grant to put up a safety fence at her new daycare business and to purchase toys. ¡Felicidades Ines!

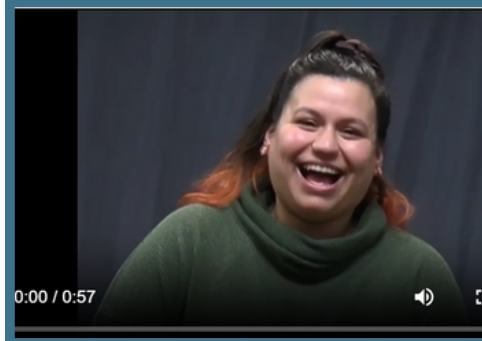


RDI regularly hosts Community Conversations webinars that explore hot rural topics.

In February, we were joined by panelists Margaret Salazar (HUD Regional Administrator) and Kenny LaPoint (Mid-Columbia Community Action Council) for "Addressing Rural Housing and Houselessness: Resources and Next Steps."

[Watch the session recording - and previous Community Conversations - here.](#)

CELEBRATING WEST OLYMPIC STORIES



The Forks & West End cohort of the Clallam County WA Leadership Program is nearing completion of their program and community impact project: a celebration of local stories. The cohort's project exemplifies local people working together to elevate rural voices; the web pages they created provide a free platform for inclusive stories that reflect the West End community of Clallam County. As the website states, *"Connection is important in such a vast area."* The cohort aims to connect community members by sharing their stories, which focus on cultural ties, meaningful events, and varied interpretations of 'community.'

Through community-centered leadership trainings, the cohort built skills to lead this collaborative group project. Local volunteers consist of leaders drawn from education, government, NOLS, and the retirement community. Thanks to the Medina Foundation, Ben Phillips Memorial Fund, the Nature Conservancy, and NAMI-Washington for their generous support of this program.