

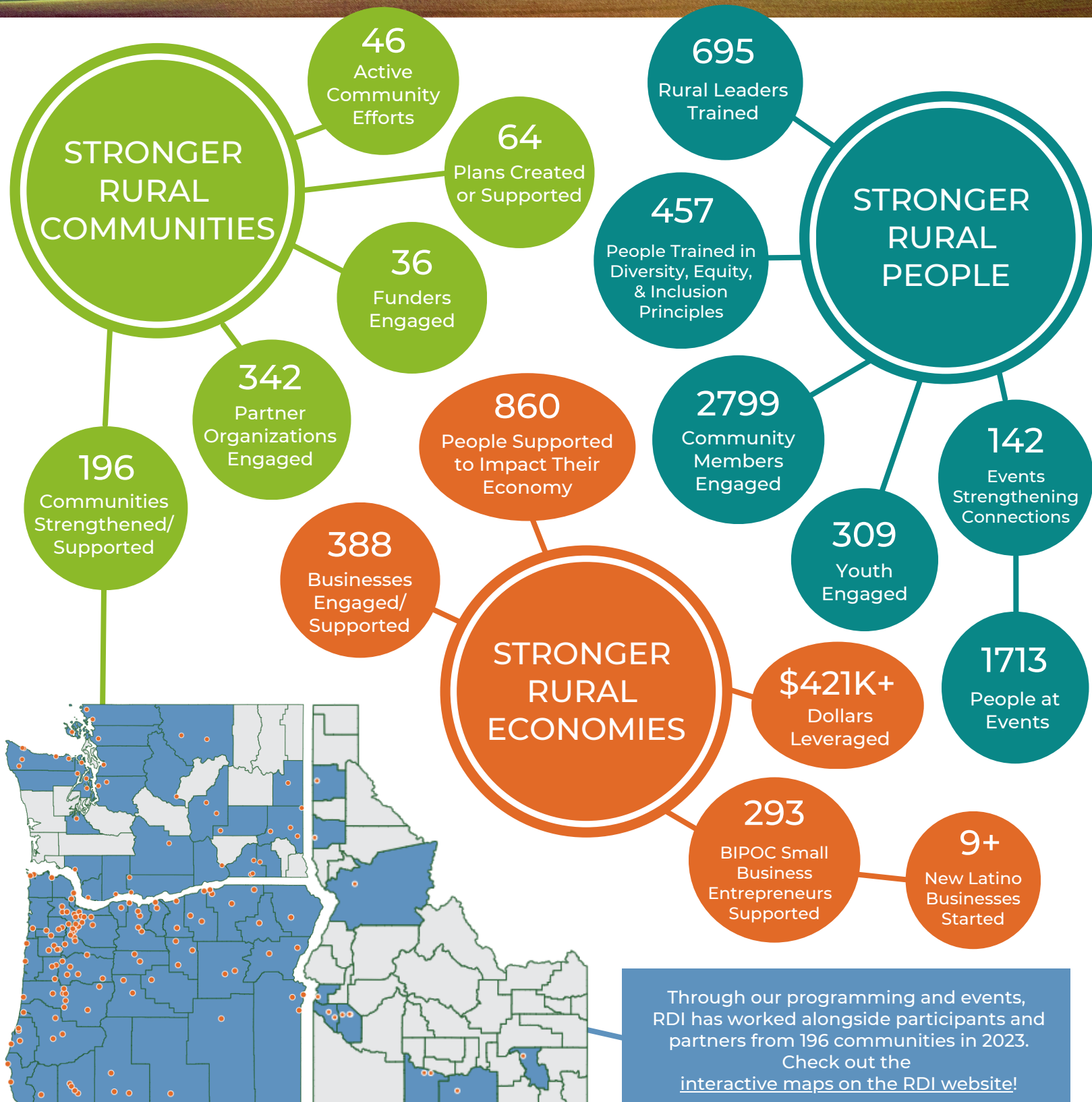
RURAL DEVELOPMENT INITIATIVES

Q3 2023 IMPACT SNAPSHOT



rdiinc.org

Cumulative 2023 Data



RURAL DEVELOPMENT INITIATIVES

Q3 2023 IMPACT SNAPSHOT



rdiinc.org

WILDFIRE RECOVERY & RESILIENCY: DISCOVERING WHAT WORKS

Because rural communities in the Pacific Northwest have considerable lived experience with response, management, and recovery related to wildfires, we are seeing creative approaches to address the many challenges of these natural disasters. In July, RDI convened a virtual Community Conversation to learn from rural innovators who have led these efforts. Oregon State Representative Pam Marsh; Kevin Dial, Santiam Canyon Long-Term Recovery Group; and Michael Morter, DiamondM Consulting shared insights into response and recovery efforts related to Oregon's Almeda and Santiam Canyon wildfires, and the importance of planning and staying focused for the long term after initial disaster response. Michael Morter, who served as Oregon's Wildfire Recovery Ombudsman following the 2020 Labor Day wildfires, emphasized that communities should, *"think about local strategies that will work in your area in terms of recovery because that's... where the real work begins. There's a tremendous amount of resources out of the gate on response but recovery takes time."*

To listen to the full conversation and access past recordings of our Community Conversations series, [visit our website](#). RDI's series of interactive Community Conversations facilitate discussion about issues and events impacting rural communities including housing, energy, and funding strategies. These webinars are presented by RDI with generous support from The Ford Family Foundation.

INSPIRING THE NEXT GENERATION OF RURAL NONPROFIT LEADERS

RDI recently collaborated with Pacific University to offer a Special Topics course within the Masters in Nonprofit Leadership program. The course focused on tools and information related to operating nonprofit organizations in rural communities. Led by RDI's Executive Director Heidi Khokhar, this was an incredible and inspiring way for RDI leaders to share their knowledge with the upcoming generation of nonprofit leaders. Thanks to Pacific University and The Ford Family Foundation for their generous support of this project.

“ I think we are all leaders—we just need to listen to each other and value our differences. We are all the main characters of our own stories. It just takes sometimes stepping outside of your own narrative to hear the stories that connect us. Without people who care, and who make the effort to make the world a better place, nonprofits would have a hard time existing. ”

- 2023 Course Participant

TAKING THE FIRST STEPS: CHILD CARE IN RURAL



A group of engaged entrepreneurs from the Twin Falls, ID, area participated in RDI's training delivered in Spanish and focused on how to start a child care business. Attendees learned about the startup process, licensing requirements, ways to promote their business, record keeping, and more. Tremendous thanks to the Idaho Association for the Education of Young Children for supporting this program.

“ Because of this training, I know how and where to start; I have tools and know where to go for resources and support throughout the process. ”

- Child Care Business Training Participant



As part of Elevate Othello, a USDA Rural Development Program Placemaking Innovation Challenge, teens and young adults in Othello, WA, worked together with RDI to “imagine their dream community.”