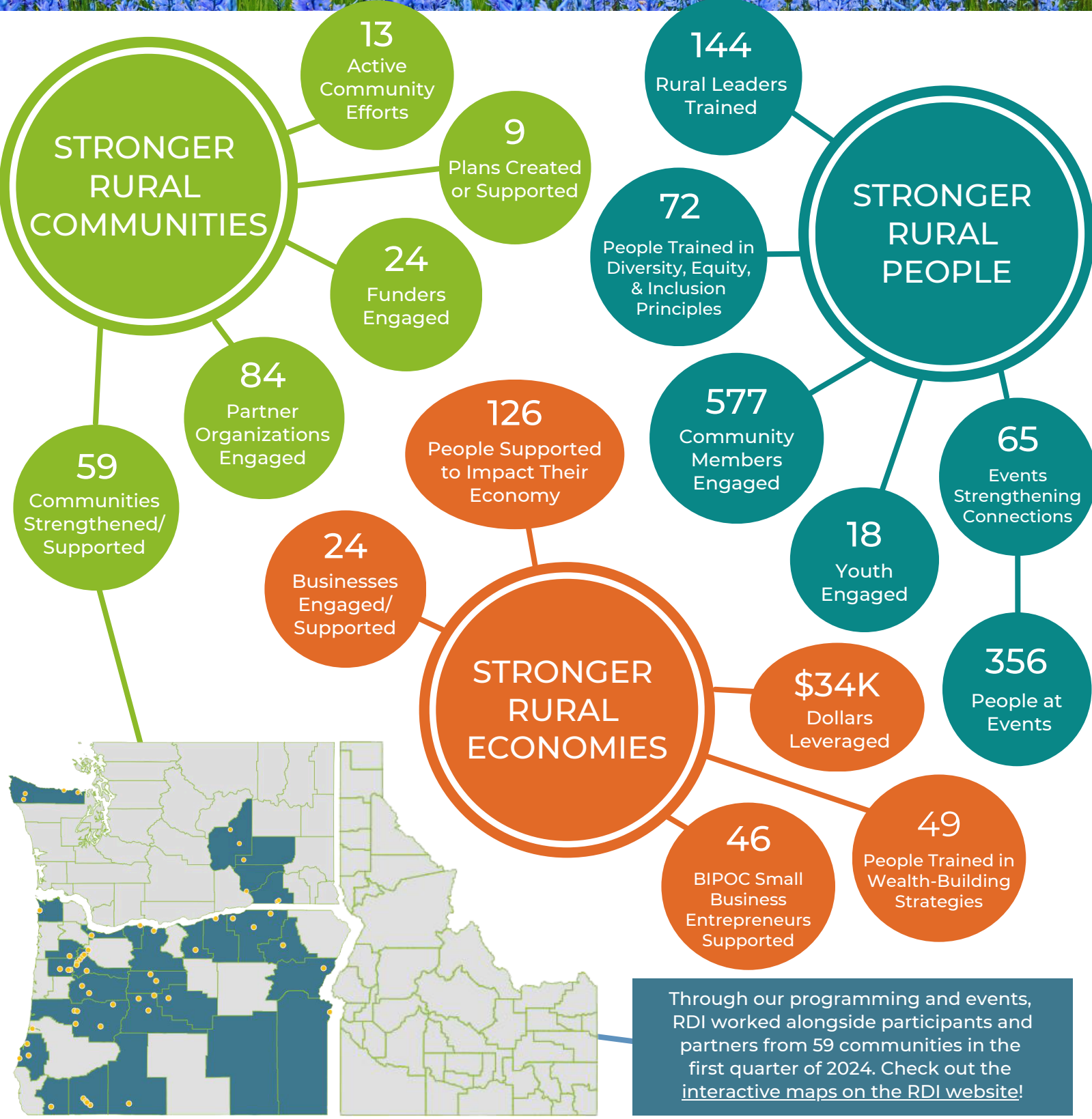


RURAL DEVELOPMENT INITIATIVES Q1 2024 IMPACT SNAPSHOT



rdiinc.org



Through our programming and events, RDI worked alongside participants and partners from 59 communities in the first quarter of 2024. Check out the [interactive maps on the RDI website!](#)

RURAL DEVELOPMENT INITIATIVES

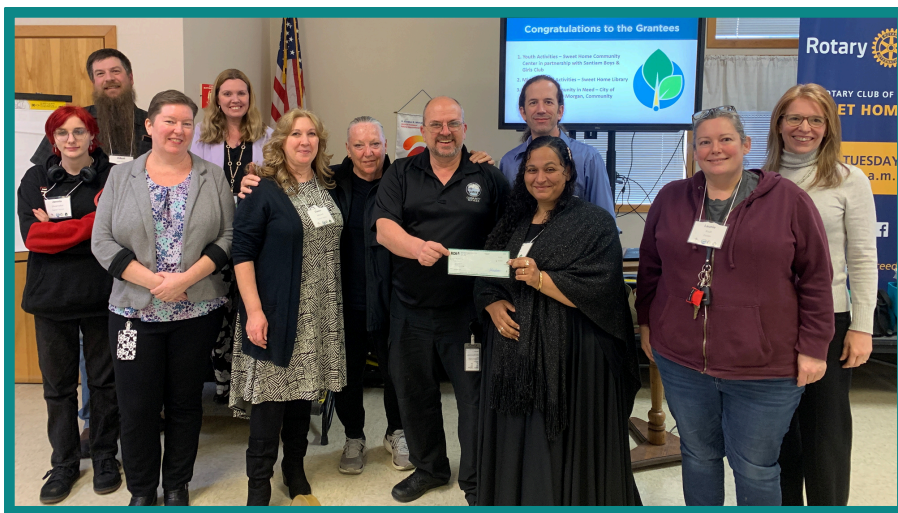
Q1 2024 IMPACT SNAPSHOT



rdiinc.org

LEARNING TO LEAD IN SWEET HOME

Community members in Sweet Home, OR, participated in RDI's Rural Community Leadership Program, gaining leadership skills and confidence, learning to work with others, and making deeper connections in the community. As part of the class, the group identified projects to move forward, choosing to focus on youth efforts through the Boys & Girls Clubs of the Greater Santiam and the Sweet Home Public Library to expand programs for middle school-aged students. The cohort will also work collaboratively with other local organizations to provide hygiene packs for unhoused people and others in need in the community. Thanks to the City of Sweet Home, Sweet Home Community Foundation, and The Ford Family Foundation for their support of the Sweet Home Rural Community Leadership Program.



“ This program is beneficial for up and coming or new leaders who have had limited exposure to leadership development. ”
- Sweet Home Rural Community Leadership Participant

MONEY SMART IN OTHELLO



A group of 24 community members from the Othello, WA, area participated in RDI's Pasos al Éxito Money Smart program. This financial literacy program is delivered in Spanish and teaches basic financial skills along with providing support to rural Latinos interested in starting small businesses. Participants reported that this program taught them to track income and expenses, ways to start saving, how to improve credit scores, and gave them confidence to ask questions and understand bank transactions. This program was delivered as part of Elevate Othello, a two-year effort to improve community vitality and foster economic growth, and funded by a USDA Rural Placemaking Innovation Challenge grant.

“ Through this training, I learned more about how to be financially stable. ”
- Pasos al Éxito Money Smart Participant

INVESTING IN A MORE VITAL RURAL OREGON

RDI has been convening and participating in a collaborative leadership development and civic engagement series along with representatives from organizations across the state of Oregon. The group has met virtually and in person to work together to expand our networks as rural service providers; build relationships and collaborations; identify our service areas; discuss space equity and inclusion; and think about community-centered approaches. At the last session, participants engaged in a mapping activity which provided a great visualization of the communities we serve, where we overlap, and where gaps in our services exist in Oregon, prompting insight into how to better serve rural people and places. Thanks to the Reser Family Foundation and The Ford Family Foundation for their support of this work.