



Clatsop
Community
College

ENERGY EFFICIENCY & HISTORIC PRESERVATION



Veterans ★ Day ★

Thank you for your courage,
dedication, and hard work.
And thanks to the military
families for their support,
resilience, and sacrifice.



Tremendous Thanks!



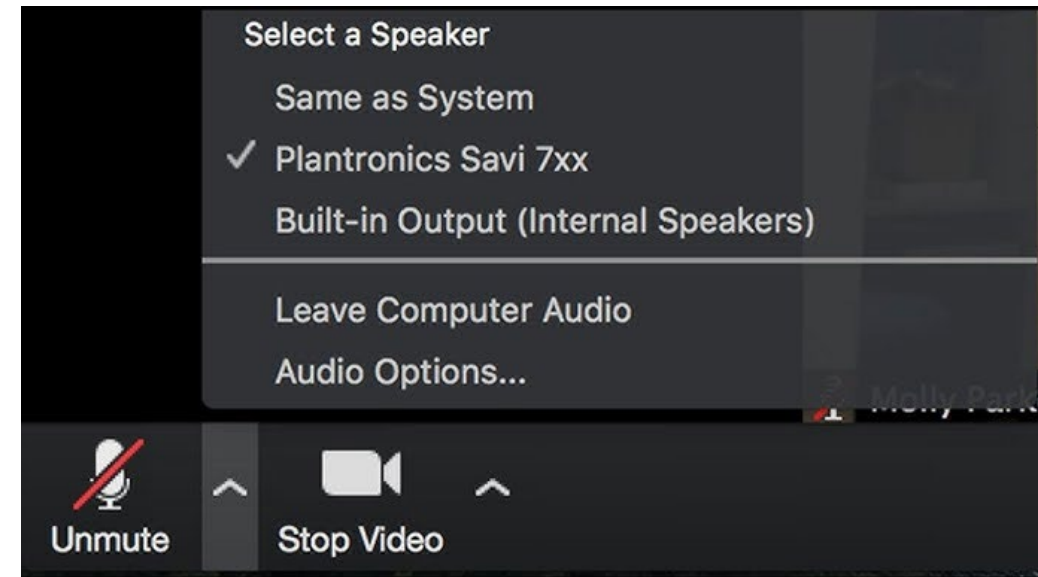
OREGON MAIN STREET

Satterberg
foundation



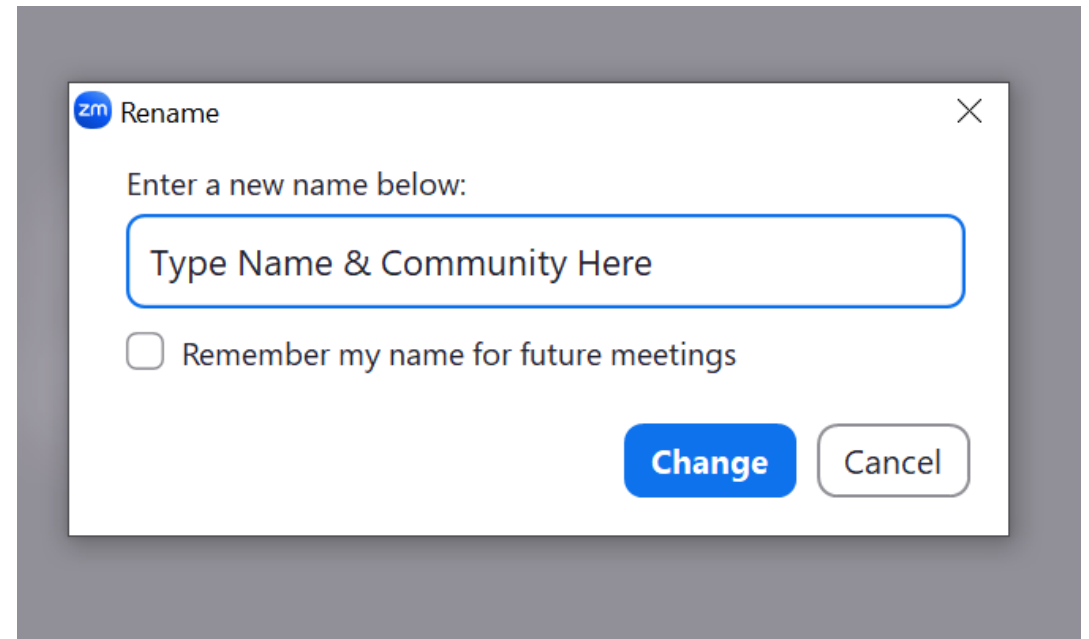
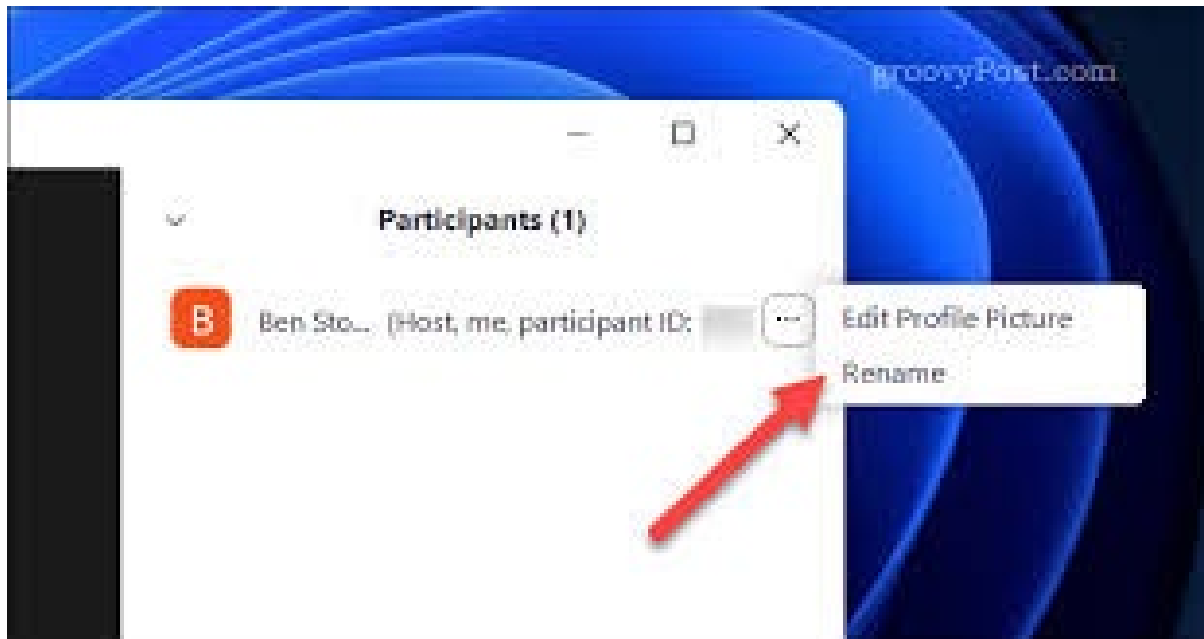
Zoom Tips

- Please keep muted when not speaking
- Turn on your camera if you're able
- Use chat feature for questions and comments



Zoom Tips

Change your display name
First Last, Location (pronouns if you like)



PLEASE DO NOT SHARE THE ZOOM LINK OR SEND IT OUT
Only send names and e-mails to Alison to add to distribution list



Strengthens Rural People, Places, & Economies in the Pacific Northwest

**Develop Networks of
Rural Leaders**

**Revitalize
Rural Economies**

**Elevate Rural Voices and
Priorities**

**Improve
Access to Resources**

www.rdiinc.org

Workshop Series Overview

- Economic Vitality 101
- Leadership 101
- Business & Property Owner Engagement
- Key Mindsets for Inclusive Engagement
- Place-Based Economy Building
- **Energy on Main**
- Innovation in Rural
- Entrepreneurship in Rural
- Leadership in Action
- Funder Panel

Group Norms

- Take care of your own needs
- Participate fully and respectfully
- Check assumptions and ask questions
- Lead with **curiosity** *in yourself and interactions with others*
- Confidentiality



Peer Learning



Who has connected with their peer learning group?

Meet the Partners



Karen Chase
Energy Trust of Oregon



Lisa Scholin
Pacific Power

Meet the Presenters

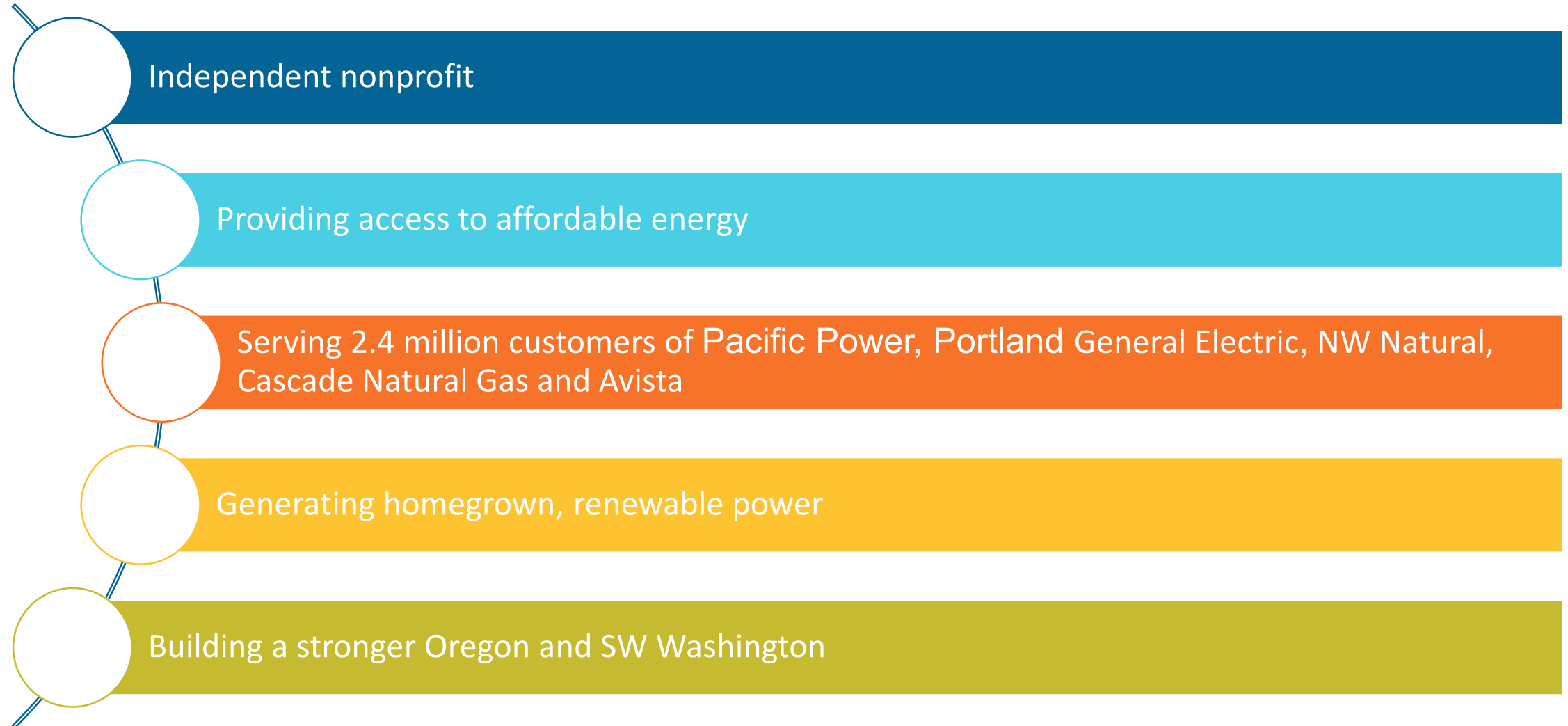


John Goodenberger
Clatsop Community College
Historic Preservation & Restoration

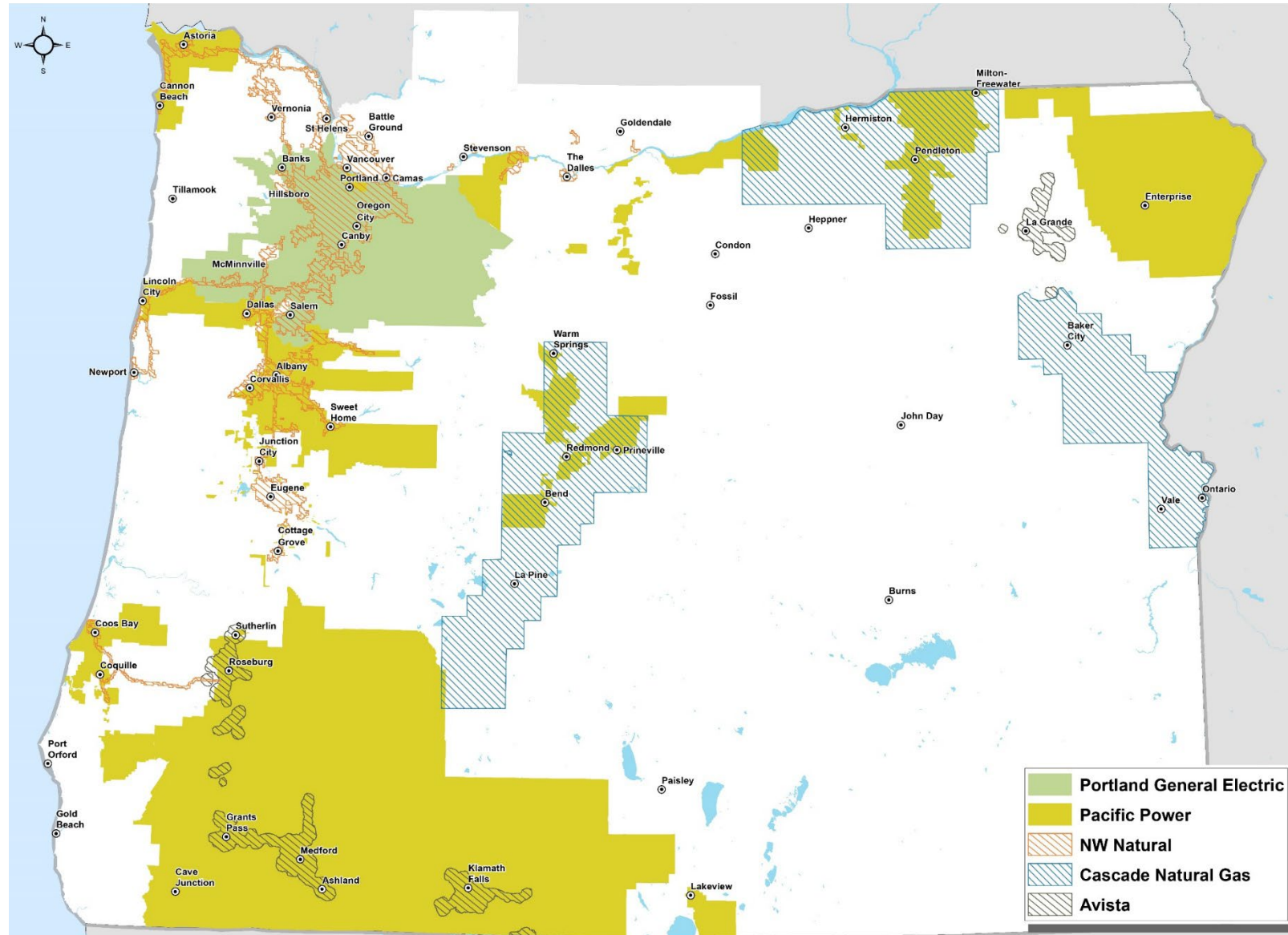


Lucien Swerdloff
Retired, Clatsop Community College
Historic Preservation & Restoration

About Energy Trust



Energy Trust – Service Territories



Serving utility
customers of:

Pacific Power

PGE

Avista

Northwest Natural

Cascade Natural Gas

Energy Trust - Regional Outreach Managers

Arpana Nautiyal

Portland Metro

Multnomah, Washington, Clackamas, Columbia, Yamhill & Clark Co.

arpana.nautiyal@energytrust.org

503-334-7501



Maria Robinson

Mid-Willamette Valley & Coast

Clatsop, Tillamook, Lincoln, Marion, Polk, Linn, Benton & Lane Co.

maria.robinson@energytrust.org

509-944-1210



Heather McNeill

Southwestern Oregon Jackson, Josephine, Douglas & Coos Co.

heather.mcneill@energytrust.org

541-930-0606



Dani Wilgus

Eastern Oregon

Hood River, Wasco, Sherman, Gilliam, Morrow, Umatilla, Wallowa, Union, Malheur & Baker Co.

dani.wilgus@energytrust.org

541-906-7987



Nate Merrill

Central & S-Central Oregon

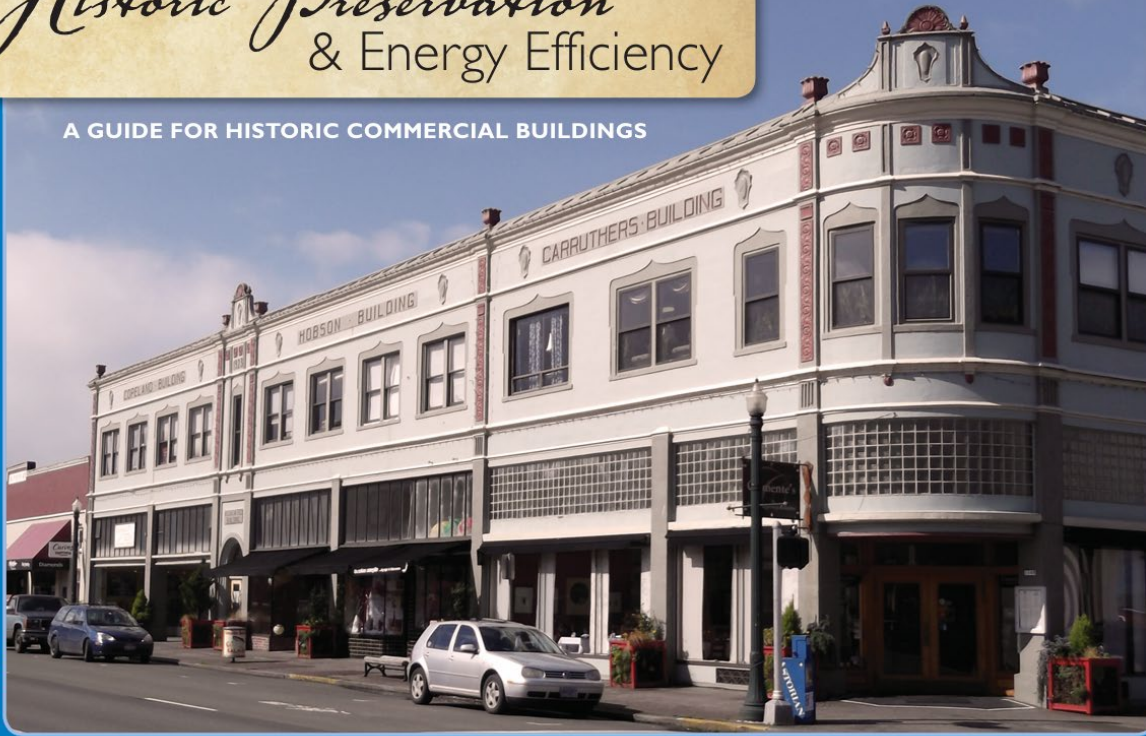
Deschutes, Crook, Jefferson, Klamath & Lake Co.

nate.merrill@energytrust.org

541-760-5592

Historic Preservation & Energy Efficiency

A GUIDE FOR HISTORIC COMMERCIAL BUILDINGS



Joint Effort on Historic Preservation and Energy Efficiency

Find it at:

[PP OR Historic Preservation and
Energy Efficiency Booklet.pdf](#)

Pacific Power, in collaboration with the Oregon Main Street Program and Energy Trust of Oregon, recognized a need for a resource guide to assist small commercial property owners and businesspeople with this question. Many people do not know where to begin and are confused by the array of options. Some are uncomfortable speaking with professional contractors and need background before developing a project. Others need concrete examples of success before they spend their money.

What's Next

1) Evaluation!

- When the Zoom session ends

2) Resource Website:

- rdiinc.org/main-street-2025-resources/
- Includes contact info for John and Lucien; they are available for questions until end of the year

3) Next Virtual Workshop:

- Innovation in Rural with Brad Attig
Tuesday, February 3
9:30 a.m. Pacific/10:30 Mountain

4) Teamwork:

- Connect with your peer learning group

